

Vantage

BY **CSC** TRIKES

PRELOADER INSTALLATION

1.) MOUNTING BRACKET

- 1 - Mounting Bracket (PRL – 70538)
- 1 - M10 – 1.25 x 16mm (FST – 28785)
- 1 - M10 Flat Washer (FST – 18709)
- 1 - M6 – 1.0 x 30mm (FST – 79377)
- 1 - M6 Nyloc Nut (FST – 43091)
- 2 - 1/4 Flat Washer S.S. (FST – 18288)
- 3 - 10-32 x 1 BHSCS

**ALL ORDERS ARE DOUBLE
CHECKED TO ELIMINATE
SHIPPING ERRORS.**

FILLED BY: _____

CHECKED & PACKED BY: _____

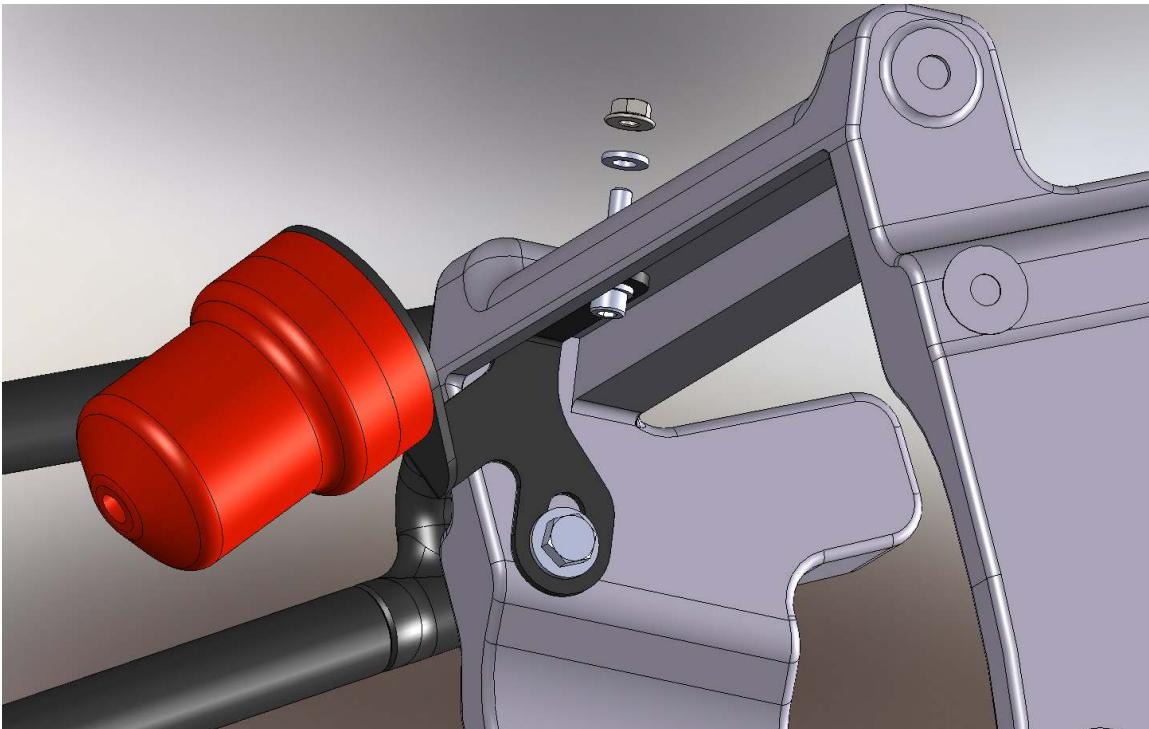
CALIFORNIA SIDECAR PARTS & TECHNICAL SUPPORT
434.263.8866

Warnings and considerations:

- 1.Disclaimer** - These instructions assume a level of understanding of motorcycle repair and maintenance beyond that of a “beginner” and/or “novice” and California Sidecar cannot be liable for an installer’s failure to understand or follow these instructions as written. Likewise, California Sidecar cannot be responsible if any of the steps are omitted or shortcuts are taken, or parts other than those supplied by California Sidecar are used.
- 2.“WARNINGS”** are all printed in bold type and capitalized. They mean to use extreme care in a given step so as not to damage the part, motorcycle, and/or yourself.
- 3.Always** wear safety glasses when using hand and/or power tools.
- 4.**When working in and around the fuel system, **always** work in a well-ventilated area, free from sparks and open flames.
- 5.**All directional references to the “right side” and the “left side” are as you were seated on the motorcycle.
- 6.**All directional references to “forward” mean to the front of the motorcycle while “back” means the rear of the motorcycle unless otherwise stated.

Preloader Installation:

- 1. Install the Mounting Bracket onto the Remote Adjuster using the three 10-32 x 1 BHSCS.**
- 2. Remove one m6 HHCS and spacer from the left side of the tool pouch tray under the driver seat.**
- 3. Install the Preloader Mount underneath the frame.**
- 4. Install the m6-1.0 x 30mm HHCS and 1/4 flat washer up through the bracket and thread into the frame with thread locking agent.**
- 5. Install the m10-1.25 x 16mm and flat washer into the lower frame hole with thread locking agent.**
- 6. Tighten both HHCS.**
- 7. Reinstall the tool pouch tray spacer then a 1/4 flat washer and m6 nyloc nut.**



**From all of us at California Sidecar.
Enjoy the ride!**